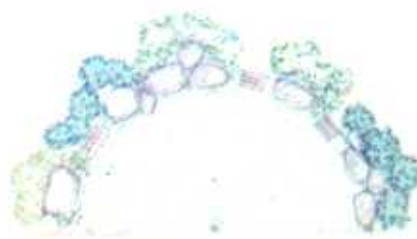




WESTON CEMETERY - Prototype Grave Layout
Illustrative Blow-Up Plan Showing Typical Grave Layout - February 28, 2011



Sketch Plan of Proposed 'Green Cemetery' Development at Ridgewood Cemetery, North Andover, MA incorporates a variety of memorialization options: shared obelisk, boulder memorials, upright markers, and stone slabs for both full-body and cremation graves.



Prototype of Cremation Burial Plot Layout for 'Green Cemetery' at Ridgewood Cemetery, North Andover, MA.



Stone Slab Shared Memorial, Burnett Burial Ground, Southborough, MA.



Illustrative Sketch of Willow Tree



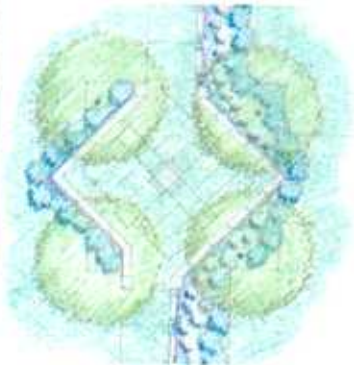
Innovative Use of granite edging as memorials - Vesper Path, Mt. Auburn Cemetery, Cambridge, MA.



Sketch and As-Built of Above-Ground Memorial of Almy Memorialization burial and memorial at Mt. Auburn Cemetery, Cambridge, MA.



Example of Shared Memorialization - Central Obelisk Marker - Image and Sketch Plan, Woodlawn Cemetery, Everett, MA.



Use of Natural Materials to Create Intimate Settings



Existing Boulders Used for Shared Memorialization - Walnut Hills Cemetery, Brookline, MA.